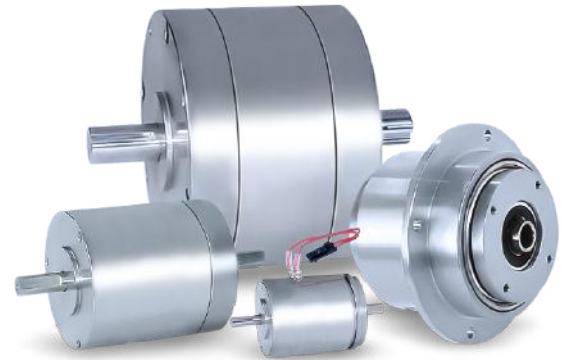


## Magnetic Particle Clutches

Small Magnetic Particle Clutches  
For units up to 130 lb.-in. (14 Nm)



MODEL	6 Volt		12 Volt		24 Volt		90 Volt	
	Resistance (ohms)	Rated Current (amperes)	Resistance (ohms)	Rated Current (amperes)	Resistance (ohms)	Rated Current (amperes)	Resistance (ohms)	Rated Current (amperes)
C2	14	0.40	56	0.21	230	0.100		
C5	8.6	0.66	33	0.34	135	0.17		N/A
CC14	5.6	0.94	22.5	0.47	90	0.24	1150	0.07
C15	7.3	0.78	28	0.41	105	0.22	1370	0.063
C35	4.0	1.43	16.3	0.70	64	0.36	788	0.10
C70	207	2.12	11	1.04	44	0.52	550	0.152
C130	N/A		9.0	1.11	42	0.49	633	0.130

Large Magnetic Particle Clutches  
For units up to 3600 lb.-in. (400 Nm)



MODEL	at 68 Degrees Farenheit	
	Input Current (amps)	Resistance (ohms)
KC-2.5	1.3	16.2
KC-5	2	9.5
POC-100F	2.4	8.2
POC-200F	2.7	7.9
POC-400F	3.5	6.9
PHC-50	1.3	15
PHC-100	2.2	10