

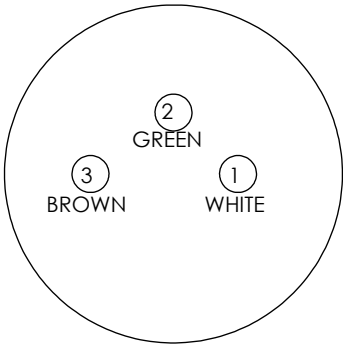
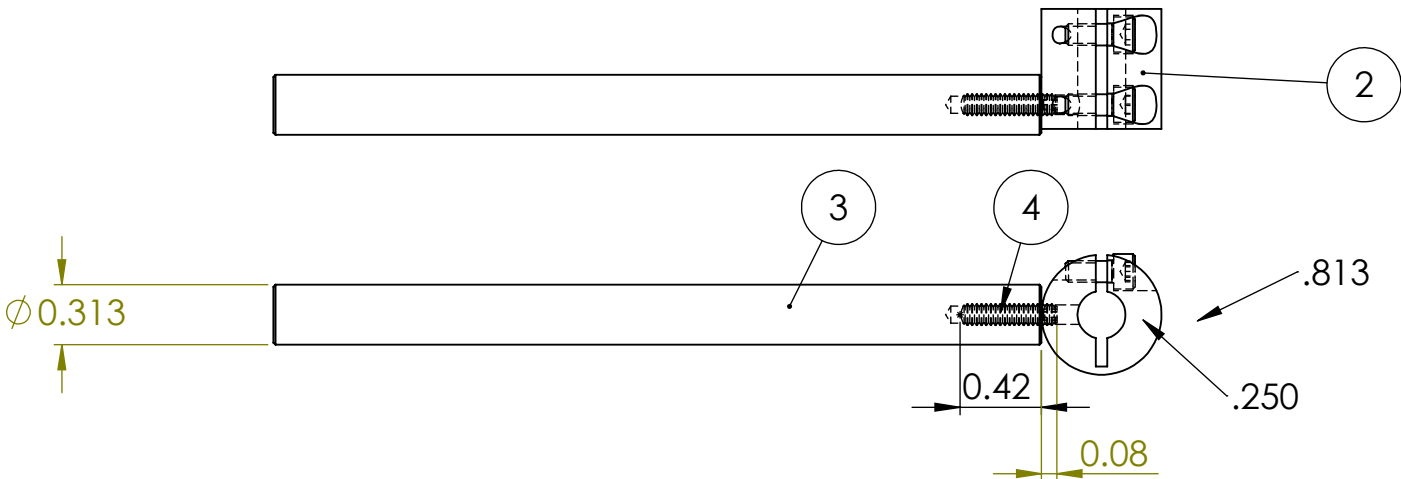
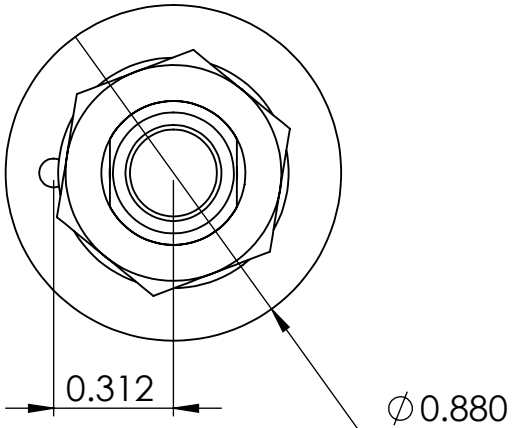
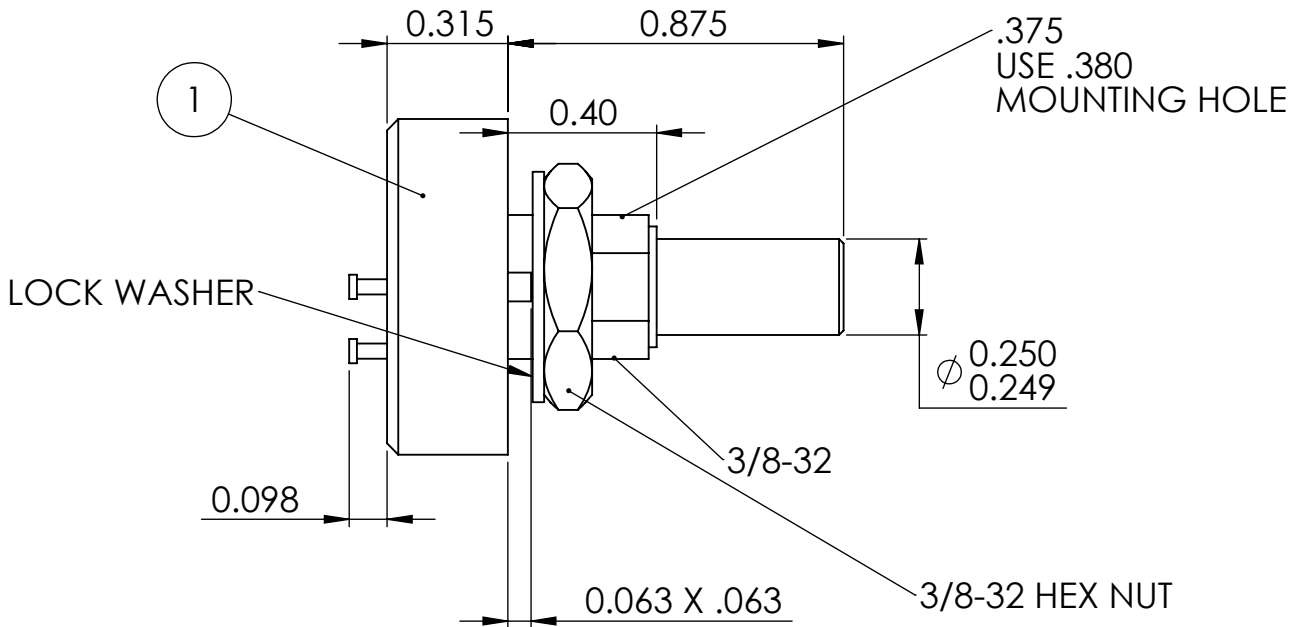
This Drawing Contains Proprietary Information And Is The Exclusive Property Of Placid Industries, Issued In Strict Confidence And Shall Not Without Prior Written Permission Of Placid Industries Be Reproduced, Copied Or Used For Any Purpose

FM-7-2

LTR	REVISION	PREPARED BY	DATE CHANGED

7" ARM 2' CABLE

ITEM NO.	PART NUMBER	QTY.
1	FM-SPW06679 POT	1
2	FMA-8500 COLLAR	1
3	FM-8700-7 ARM	1
4	SSS-4-40X1/2CP	



RESISTANCE: 500 OHMS
ELECTRICAL ANGLE: 65°
WIPER OPEN CIRCUITED OUTSIDE ACTIVE RANGE
MECHANICAL ANGLE: 360° (NO STOPS)

Unless otherwise specified, interpret drawings per GS-101. Do not scale drawing.		PLACID INDUSTRIES Elmira, NY USA Tele: 518-523-2422 www.placidindustries.com		PLACID INDUSTRIES	
.XX ± .01 .XXX ± .005 ANGULAR 0° 30'	INSIDE CORNERS: R .04 MAX. EDGES: CHAM. 45 x .005-.015	TITLE MINI FOLLOWER ARM POTENTIOMETER		FMA-7-2	
MATERIAL	HEAT TREAT	FINISH	SIZE B	FSCM NO. 1CA62	FMA-7-2
PREPARED BY BEP 11/4/20	CHECKED BY BEP 11/4/20	APPROVED BY	SCALE 2:1	SHEET 1 OF 1	